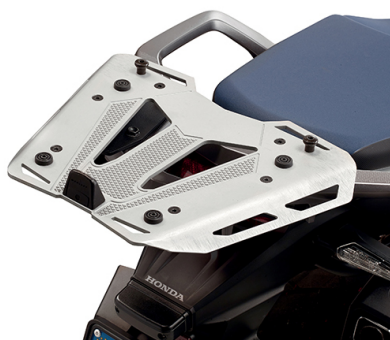




#### **KR1144**

#### **Specific rear rack for MONOLOCK® or MONOKEY® top-case**

to be combined with the MONOKEY® KM5, KM7, KM8A, KM8B, KM9A or KM9B plate, or with the MONOLOCK® KM5M or KM6M plate / if combined with KM8A, KM8B, KM9A, KM9B it does not allow the assembly of the stop light kit or the remote control device on the case



#### **KLR1144**

#### **Specific rapid release side-case holder for MONOKEY® or RETRO FIT cases**

you must move the indicators from their original position



### **KL1144CAM**

**Specific pannier holder for MONOKEY® CAM-SIDE**

18 mm diameter



### **KD1144S**

**Specific screen, smoked 47,5 x 35 cm (H x W)**

2 cm higher than the original / to be mounted instead of the original screen



### **KD1144ST**

**Specific screen, transparent 60 x 35 cm (H x W)**

14,5 cm higher than the original / to be mounted instead of the original screen



### **KD1144BO**

**Specific low and sports screen matt black 40 x 31 cm (H x W)**

to be mounted instead of the original screen



### **BF25K**

**Specific flange for fitting the tank bags with TANKLOCK system**

only compatible with DR04 Tanklock



### **KN1144**

**Specific engine guard, black**

Not compatible with CRF1000L Africa Twin DCT / 25 mm diameter steel tube / we recommend fitting by a qualified mechanic



### **KNH1144**

**Specific engine guard, black**

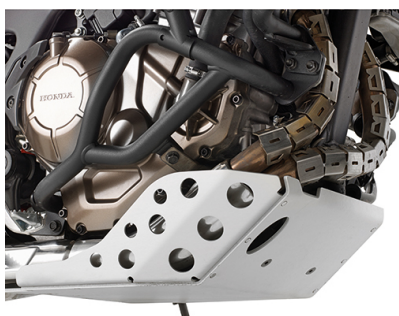
it must be mounted with KN1144, KN1144OX, KN1162, KN1162OX, KN1151 or KN1151OX / 25 mm diameter steel tube / we recommend fitting by a qualified mechanic / it protects the upper part of the radiators



### **KN1162**

**Specific engine guard, black**

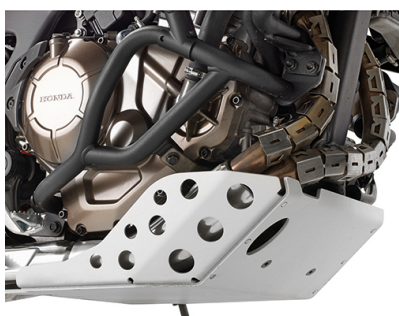
Only for CRF1000L Africa Twin DCT / 25 mm diameter steel tube / we recommend fitting by a qualified mechanic



**RP1144K**

**Oil carter protector in brushed and anodised aluminium**

thickness of 5 mm



**RP1162K**

**Oil carter protector in brushed and anodised aluminium**

thickness of 5 mm



**KHP1144**

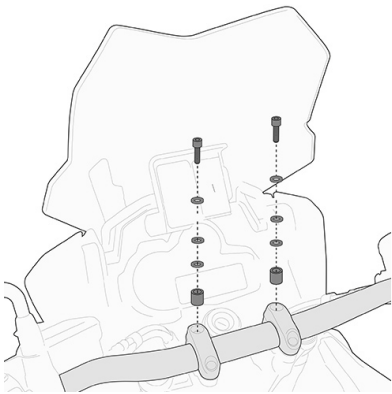
**Specific hands protector in ABS**

only compatible with the version produced with original hands protector  
/ to be mounted instead of the original hands protector

**ES1144K**

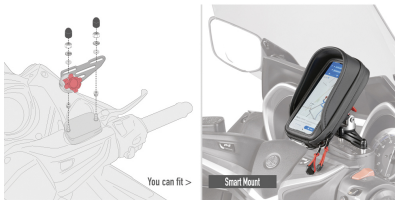
**Specific support in aluminium and stainless steel to widen the surface support area of the original side stand**





### 03SKITK

Specific kit to mounting the KS900A Smart Bar



### 01VKITK

Specific kit to mount the Smart Mount RC KS904B

needs to be mounted on the brake fluid reservoir cover right-hand side / also compatible with versions Africa Twin ABS (16 > 17), Africa Twin ABS Travel Edition (16 > 17), Africa Twin DCT ABS (16 > 17), Africa Twin DCT ABS Travel Edition (16 > 17)